

HG16

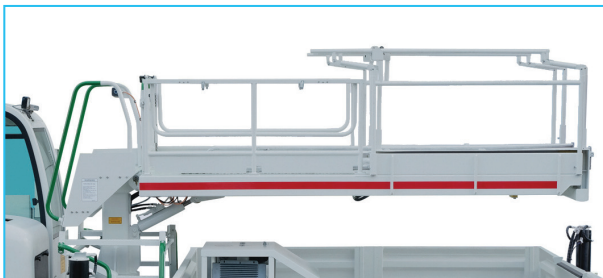
CONVEYOR BELT MAINTENANCE TRUCK



Cable or wireless remote control for all crane and cross-over platform



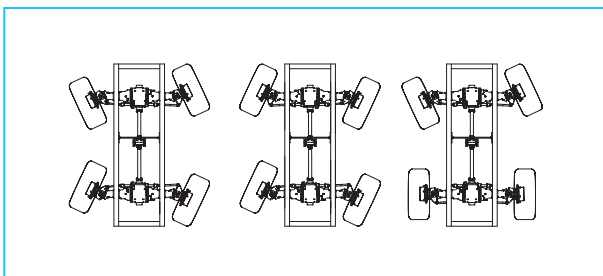
46 kNm lifting capacity, 4.9 m crane



4.5 m +/- 9° height adjustable +/- 95° pivotable telescopic platform



Closed cabin with 180° pivoting operator seat and ROPS & FOPS Level 2 certification

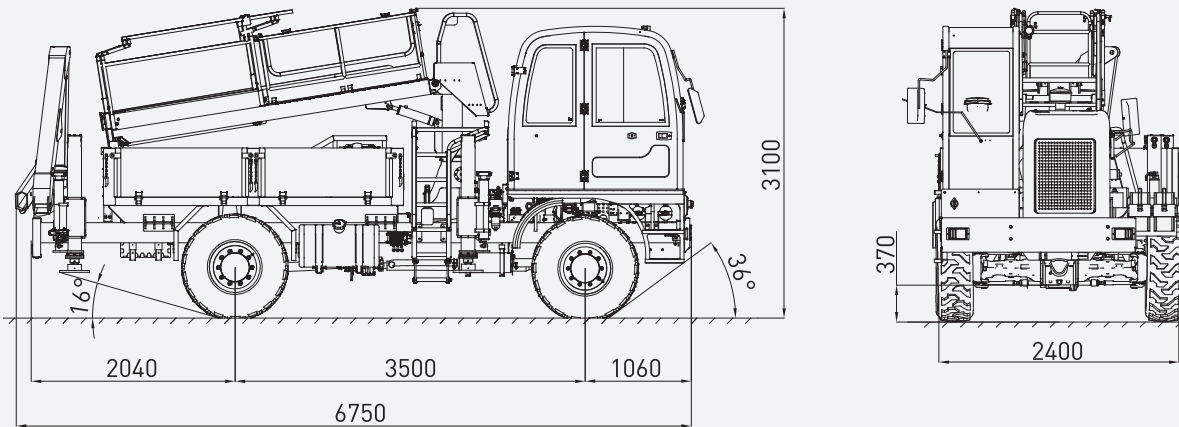


3 steering modes; Four-Wheel Steering, Front-Wheel Steering and Crab Steering

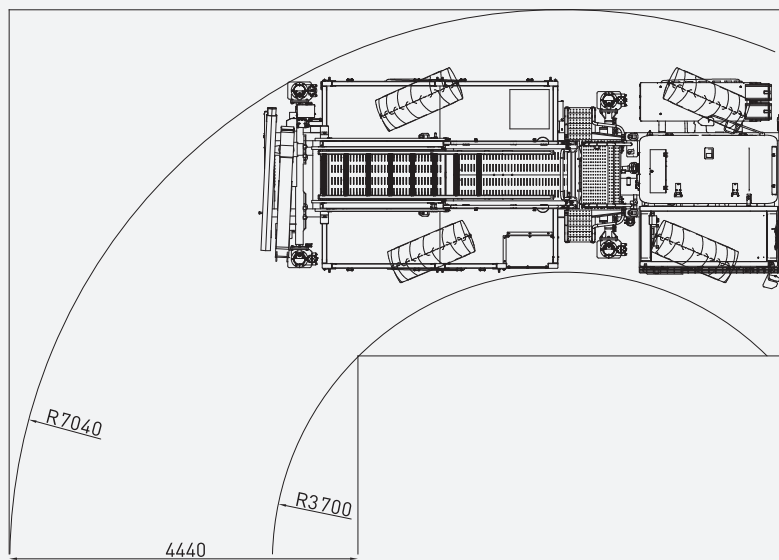


Rear view camera and LCD screen in operator cabin

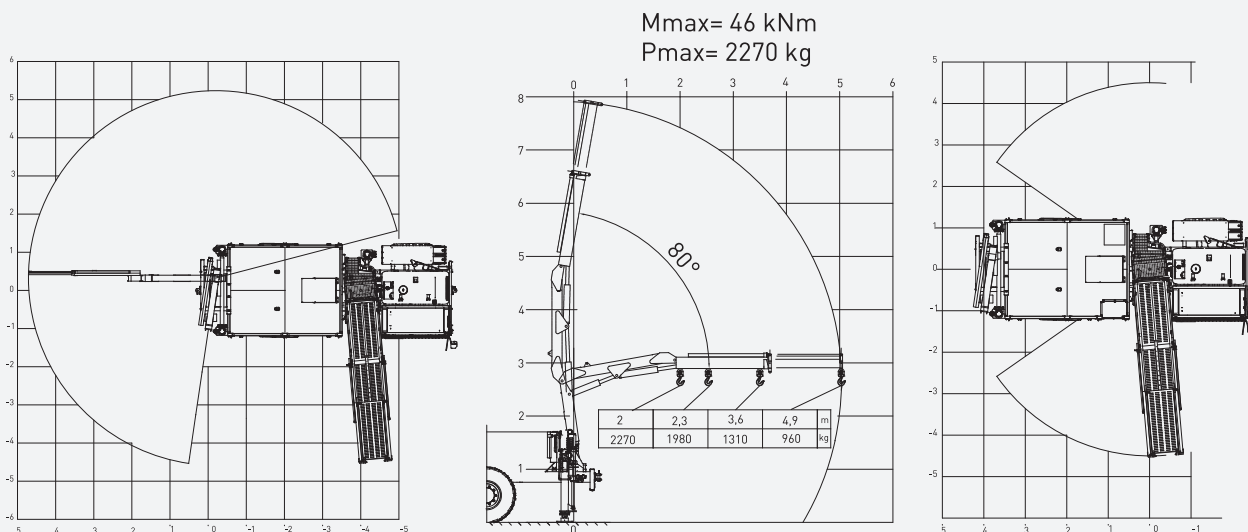
DIMENSIONS & PERFORMANCE



TURNING RADIUS



COVERAGE AREA



TECHNICAL SPECIFICATIONS

DIESEL ENGINE		ELECTRIC SYSTEM	
Make / Model:	JCB Dieselmax 444 TCA-85	Battery:	12 V - 150 Ah
Max. Power:	85 kW at 2200 rpm	Protection:	IP65
Max. Torque:	440 Nm at 1300 rpm	Lights:	2 x 1500 Lumen Led at front bumper
Engine Emission:	EU Stage 3A / US EPA Tier 3		2 x 1500 Lumen Led on operator cabin
Diesel Tank:	120 l		2 x 1500 Lumen Led at rear
	With Catalytic Converter and Silencer		Turn signals and taillights
TRANSMISSION		Beacon Lamp:	Amber color
Make / Model:	JCB PS760	TITAN CLOSED OPERATOR CABIN	
	Powershift	<ul style="list-style-type: none"> • Closed 1-person cabin 	
	Automatic and Manual 4-speed forward	<ul style="list-style-type: none"> • ROPS and FOPS level 2 certified (EN ISO 3471:2008 / EN ISO 3449:2008) 	
	Manual 3-speed reverse	<ul style="list-style-type: none"> • Mechanical suspension with manual tilt, weight, height adjustable, 180° pivotable ergonomic seat with seat belt 	
	Four-wheel drive	<ul style="list-style-type: none"> • Cabin heater 	
AXLES & TYRES		<ul style="list-style-type: none"> • Levers and indicators for all drive control 	
Make / Model:	JCB SD70	<ul style="list-style-type: none"> • In-cabin radio output and location (12V) 	
Type:	Planetary	<ul style="list-style-type: none"> • Cabin lighting 	
Front:	+/- 8° Oscillating and steerable	<ul style="list-style-type: none"> • Heated wing mirrors 	
Rear:	Rigid and steerable	DIMENSIONS & WEIGHT	
Tyres:	16.00 / 70-20	Weight:	9350 kg (Approximately)
PERFORMANCE		Length:	6750 mm
Max. Gradient:	40%	Width:	2400 mm
Max. Speed:	24.5 km/h	Height:	3100 mm
STEERING		Inner Turning Radius:	3700 mm
	Four-wheel steering	Outer Turning Radius:	7040 mm
	Crab steering	ACCESSORIES	
	Front-wheel steering	<ul style="list-style-type: none"> • Warning signs and label 	
BRAKING SYSTEM		<ul style="list-style-type: none"> • 2x4 kg portable fire extinguisher 	
Service Brake:	Hydraulically powered two-circuit oil immersed multidisc brakes in both axles	<ul style="list-style-type: none"> • 2 pcs Wheel chocks 	
Safety/Parking Brake:	Spring applied hydraulic released SAHR Fail safe	<ul style="list-style-type: none"> • Front and rear towbar 	
CHASSIS		<ul style="list-style-type: none"> • Rear light and alarm 	
Type:	Rigid, high strength steel	<ul style="list-style-type: none"> • Battery Isolator switch 	
HYDRAULIC SYSTEM		COMPRESSOR	
Pump Type:	Fixed displacement	<ul style="list-style-type: none"> • 750 l/min – 11 bar screw compressor 	
Max. Pressure:	200 bar	CRANE	
Flow Rate:	60 l/min at 2200 rpm	<ul style="list-style-type: none"> • 46 kNm Crane (4.9 m / 960 kg) 	
Hydraulic Oil Tank:	120 l	CROSS-OVER PLATFORM	
Return Oil Filter:	25 µm	<ul style="list-style-type: none"> • +/- 95° pivotable telescopic platform 	
	Oil level, filtration and temperature indicators	<ul style="list-style-type: none"> • 4.5 m long 	
		<ul style="list-style-type: none"> • +/- 9° height adjustable 	

OTHER

- Centralized greasing system
- EN19296 certified

OPTIONS

- Automatic lubrication (Greasing) system
- Air-conditioner (Heating and Cooling) in the cabin
- Manual activated fire extinguishing system
- Automatic and manual activated fire extinguishing system (Linear wired)
- Caliper brake system
- 2nd seat in the cabin
- 24 V emergency steering
- EU Stage 5 diesel engine
- Rear view camera and LCD monitor in operator cabin
- Additional side view camera
- Wireless remote control for crane and platform movement
- Spare wheel