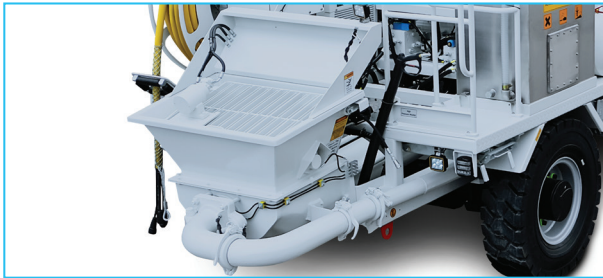
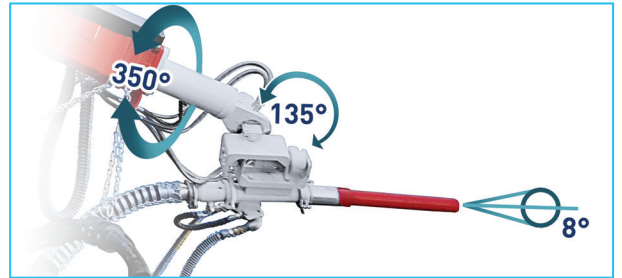


BIS20

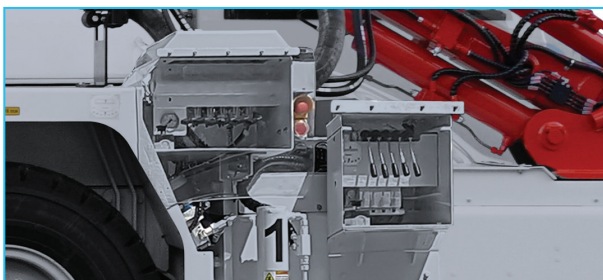
CONCRETE SPRAYING MACHINE



Titan concrete pump with casted body and hydraulic vibrator



Spraying head with 350° rotation, +/-135° tilt and 8° oscillation



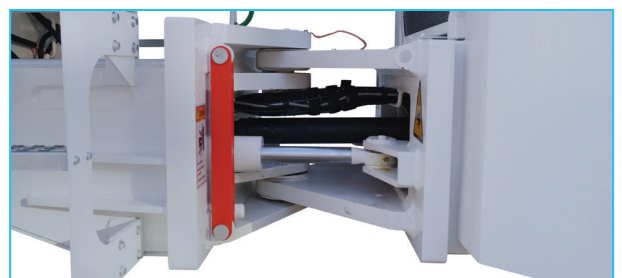
Control panel for manipulator and stabilizers



ROPS & FOPS level 2 certified closed 1-person cabin

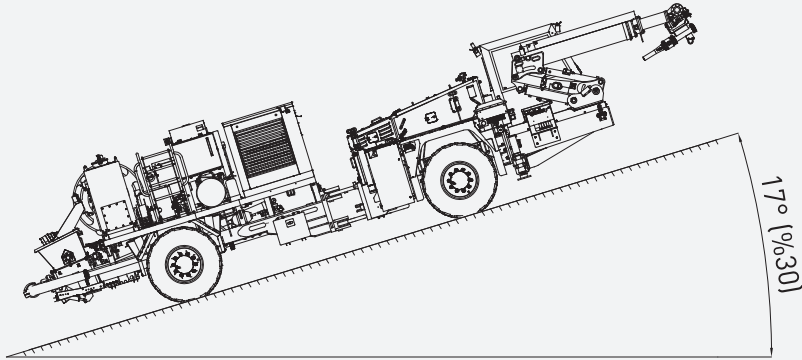
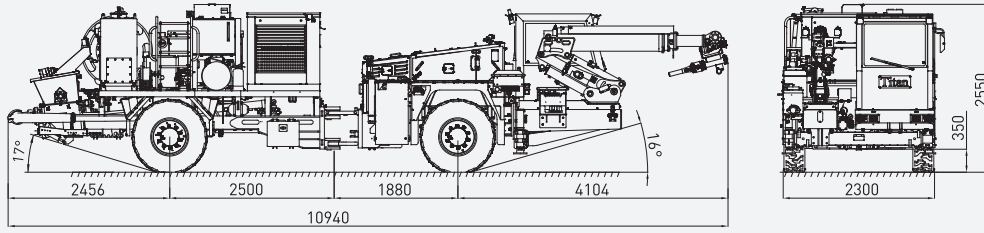


Rear view camera and LCD screen in operator cabin

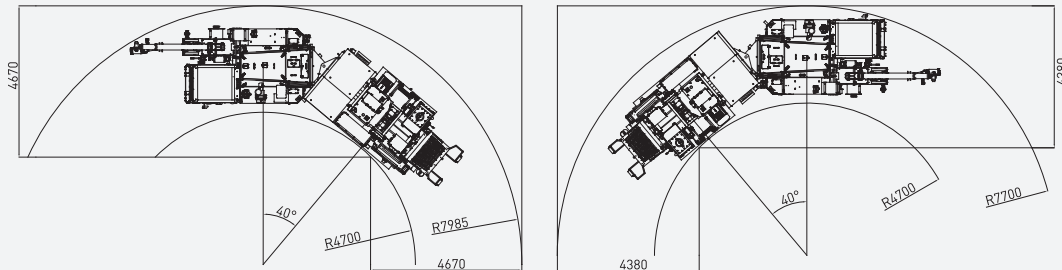


High strength articulated chassis

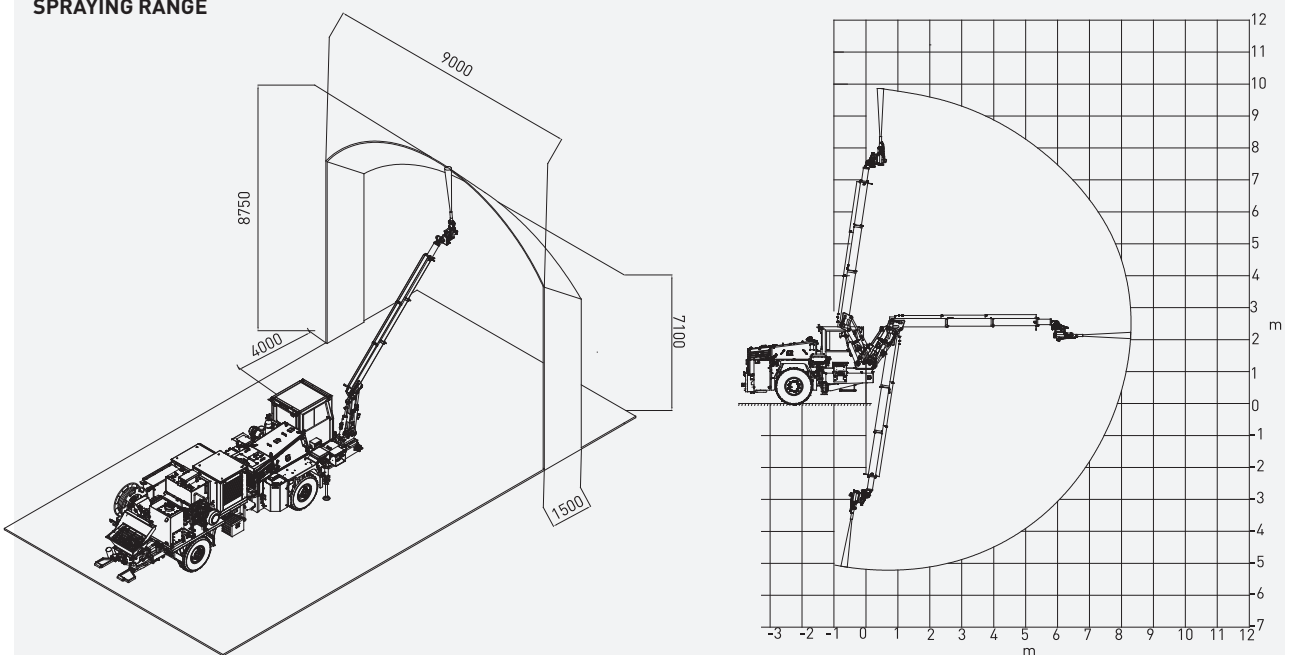
DIMENSIONS & PERFORMANCE



TURNING RADIUS



SPRAYING RANGE



TECHNICAL SPECIFICATIONS

DIESEL ENGINE		ELECTRIC SYSTEM	
Make / Model:	Deutz TCD 2013 L4 2V	Battery:	24 V – 2 x 105 Ah
Max. Power:	129 kW at 2300 rpm	Protection:	IP65
Max. Torque:	670 Nm at 1600 rpm	Lights:	4 x 1500 Lumen Led in front of the operator cabin
Engine Emission:	EU Stage 3A / US EPA Tier 3		2 x 1500 Lumen Led behind of the operator cabin
Diesel Tank:	140 l		2 x 1500 Lumen Led at bumper
	With Catalytic Converter and Silencer		2 x 1500 Lumen Led on boom
			1 x 1500 Lumen Led on hopper
			Turn signals and taillights
TRANSMISSION		Box Type:	Stainless steel
Make / Model:	Dana Spicer T24000	Beacon Lamp:	Amber color
	Powershift		
	Automatic 3-speed forward and reverse		
	Four-wheel drive		
AXLES & TYRES		TITAN CLOSED OPERATOR CABIN	
Make / Model:	Dana Spicer 113	<ul style="list-style-type: none"> • Closed 1-person cabin • ROPS & FOPS level 2 certified (EN ISO 3471:2008 / EN ISO 3449:2008) • Mechanical suspension with manual tilt, weight, height adjustable, "T" shaped seat with 3-point seat belt (Forward tilting system) • Cabin heater • Rear view camera and LCD screen in operator cabin • Levers and indicators for all driving controls • In-Cabin radio output and location (12V) • Cabin lighting • Heated wing mirrors • Document box • Transparent protection plate on the windshield 	
Type:	Planetary		
Front:	+/- 8° Oscillating		
Rear:	Rigid		
Tyres:	12.00 – 20		
PERFORMANCE			
Max. Gradient:	30%		
Max. Speed:	24.5 km/h		
Max. Tractive Effort:	122 kN		
STEERING			
	Articulation, +/- 40°		
	Orbitrol Type		
BRAKING SYSTEM		DIMENSIONS & WEIGHT	
Service Brake:	Hydraulically powered two-circuit oil immersed multidisc brakes in both axles	Weight:	16500 kg (Approximately)
Safety/Parking Brake:	Spring applied hydraulic released SAHR Fail safe	Length:	10940 mm
		Width:	2300 mm
		Height:	2550 mm
		Inner Turning Radius:	4700 mm
		Outer Turning Radius:	7985 mm
CHASSIS		MISCELLANEOUS	
Type:	Articulated, high strength steel	<ul style="list-style-type: none"> • Warning plates and decals • Tool box • 2x4 kg portable fire extinguisher (1 in operator cabin) • 2 pcs Wheel chocks • Front towbar • Back-up alarm and light • Battery isolator switch 	
Stabilizers:	2 pcs, extendible		
HYDRAULIC SYSTEM			
Pump Type:	Fixed and variable displacement		
Max. Pressure:	210 bar		
Flow Rate:	290 l/min at 1450 rpm		
	125 l/min at 2300 rpm (Diesel)		
Hydraulic Oil Tank:	325 l	MANIPULATOR	
Return Oil Filter:	20 µm	Max. Spray Reach at Vertical:	9.8 m
	Oil level, filtration and temperature indicators	Max. Spray Reach at Horizontal:	8.3 m

SPRAYING HEAD	
Rotation:	350°
Tilt:	+/- 135°
Oscillation:	8°
CONCRETE PUMP	
Make / Model:	Titan hydraulically driven double piston pump
Max. Capacity:	34 m³/h (Theoretical)
Concrete Cylinder:	180 x 1000 mm
Max. Concrete Pressure:	50 bar
Max. Hydraulic Pressure:	210 bar
Hopper Volume:	250 l
Concrete Line Diameter:	5" – 4" – 3 1/4"
	Hydraulic vibrator on hopper grate
	Hydraulically controlled shutter at bottom (hopper flush)
POWER PACK	
	<ul style="list-style-type: none"> • 1470 rpm Electric motor • 55kW – 400V – 50Hz – IP55 • Diesel engine PTO driven hydraulic system for cleaning against power cut
CABLE REEL	
Drive:	Hydraulic
Power:	400 V 50 Hz
Cable Length:	50 m
Cable Cross Section:	3 x 70 mm² + 1 x 35 mm²
	3 x 70 mm² + 3 x 16 mm² (Option)
	Stainless collector box
CABLE REMOTE CONTROL	
Type:	Cable
Cable Length:	15 m
Specifications:	<ul style="list-style-type: none"> • All nozzle and manipulator movements • Nozzle oscillation • Air line on/off • Dosing on/off • Dosing flow rate adjustment • Concrete pumping/reverse • Emergency stop • Horn

COMPRESSOR	
Make:	Ekomak
Type:	Electric screw compressor
Power:	55 kW
Max. Air Flow:	10.2 m³/min
Max. Working Pressure:	6 bar
Cooling Fan Motor:	1.1 kW
DOSING SYSTEM	
Type:	Frequency convertor controlled electric driven piston pump
Power:	1.5 kW
Max. Flow Rate:	600 l/h
Max. Working Pressure:	8 bar
Additive Tank:	500 l (Stainless)
	Stainless steel additive line
HIGH PRESSURE WASHING SYSTEM	
Pump Drive:	Hydraulic
Pressure:	135 bar
Flow Rate:	16 l/min
Hose Length:	10 m
Water Tank:	75 l
OTHER	
	<ul style="list-style-type: none"> • Centralized greasing system
OPTIONS	
	<ul style="list-style-type: none"> • Automatic centralized lubrication system • Electrical outlet in the cabin 220 Volt - 150 Watt • Air-conditioner (Heating and Cooling) in the cabin • Wireless remote control • Manual activated fire extinguishing system • Automatic and manual activated fire extinguishing system (Linear wired) • PLC Concrete and dosage control system • PLC Concrete and dosage monitoring system • Placing rubber on the cabin roof to protect against corrosion from rebound deposition (Standards B33) • High pressure wall washing kit (water scaler) • 24 V emergency steering • Diesel particulate filter - DPF • EU Stage 5 diesel engine • Additional side view camera • Form oil system • Spare wheel